



MAPLE LEAF DIAMONDSTM

COLLECTIONS





OUR JOURNEY

Maple Leaf Diamonds™ are mined in the pristine wilds of Canada's North. Such unique stones are formed deep within the heart of the Canadian north, emerging as beautiful, one of a kind treasures. As such, they are some of the most highly prized diamonds in the world.

An incredible journey of unequalled care and attention from the mine to the finger is an inspiring part of your love story. Just like the love you've discovered, Canadian Maple Leaf Diamonds™ and Canadian Certified Gold are a perfect match. It's 0.9999 purity is skillfully alloyed to ensure the perfect colour and karat adhering to the strictest global standards. Look for the Canadian Certified Gold insignia  stamped on the product, it's your assurance that only gold mined in Canada has been used in the creation of your jewellery.





TIDES OF LOVE™

As beautiful as a sunset on the ocean,
As majestic as a slow moving river,
As powerful as a roaring waterfall.





T
IDES OF LOVE™





From that initial spark that you felt on your first date,
to that roaring fire that rages in your heart now,
the Eternal Flames Collection captures all those feelings.

E^TERNAL FLAMESTM



CANADIAN CERTIFIED GOLD



E^TERNAL FLAMESTM



IND'S EMBRACE™

Captures that whirlwind of emotions you feel when
you have found your true love.







MAPLE LEAF DIAMONDS™

There's nothing more pure than true love. Cherish it always with Pure White™ gold. These stunning designs are manufactured in nickel-free 18Kt gold palladium alloy making it hypoallergenic and that allows the jewellery to maintain that bright, white, platinum like colour for years to come.



 WIND'S EMBRACE™





 CIRCLE OF LOVE™





150TM CUT



With almost three times as many facets as a traditional round ideal cut diamond, the One-FiftyTM Cut takes a highly skilled diamantaire three times longer to polish. This exacting process creates more brilliance, more contrast, more scintillation, and more fire in every One-FiftyTM Cut diamond. The One-FiftyTM diamond embodies the singular spirit of Canada and is a true Canadian treasure.

This exclusive patented cut diamond can be set in any round brilliant cut style.



 SEASONS™

DESIGNED
FOR YOU
BY


SHELLY
PURDY



 PRING

SUMMER





MAPLE LEAF DIAMONDS™

As a proud Canadian and firm believer in ethical sourcing I feel it's a natural fit and ultimate privilege to design this special collection for Maple Leaf Diamonds, the leader in Canadian diamond jewellery.

The Seasons collection is inspired by the nature infused in our ever-changing Canadian landscape. Awakening delicate buds of spring, sparkling summer lakes, earthy autumn forest trails, followed faithfully each year by the winter beauty of gently falling snow.

SHELLYPURDY®



AUTUMN

WINTER



IAMOND BANDS



P LATINUM





PEAR CUT

Page 4 [ML649](#)



Page 4 [ML459](#)



Page 4 [ML639](#)



Page 4 [ML645](#)



Page 5 [ML519 & ML525](#)



Page 5 [ML576](#)



Page 5 [ML575](#)



Page 6 [ML388](#)



Page 6 [ML204](#)



PRINCESS CUT

Page 6 [ML655](#)



PRINCESS CUT

Page 6 [ML274](#)



Page 6 [ML393](#)



Page 7 [ML654](#)



CUSHION CUT

Page 7 [ML653](#)



Page 8 [ML500](#)



PRINCESS CUT

Page 8 [ML501](#)



Page 9 [ML657](#)



Page 10 [ML564](#)



PRINCESS CUT

Page 10 [ML610](#)



Page 10 [ML110](#)



RADIANT CUT

Page 11 [ML651](#)



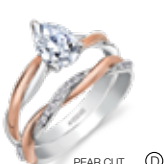
Page 11 [ML214](#)



Page 11 [ML377](#)



Page 11 [ML442](#)



PEAR CUT

Page 11 [ML644](#)



Page 12 [ML342](#)



Page 12 [ML341](#)



Page 12 [ML461](#)



Page 13 [ML389](#)



PRINCESS CUT

Page 14 [ML563](#)



Page 14 [ML250](#)



Page 14 [ML279](#)



Page 15 [ML331](#)



Page 15 [ML516](#)



PRINCESS CUT

Page 15 [ML650](#)



Page 15 [ML463](#)



Page 17 [ML570](#)



PRINCESS CUT
Page 17 [ML571](#)



Page 17 [ML376](#)



Page 17 [ML648](#)



Page 17 [ML646](#)



Page 18 [ML582](#)



Page 18 [ML581](#)



Page 18 [ML616](#)



Page 18 [ML517](#)



Page 18 [ML549](#)



Page 19 [ML546 & ML660](#)



Page 20 [ML593](#)



Page 20 [ML429](#)



Page 20 [ML658](#)



Page 21 [ML642](#)



Page 21 [ML641](#)



Page 21 [ML647](#)



Page 21 [ML640](#)



Page 22 [ML590](#)



Page 22 [ML589](#)



Page 22 [ML476](#)



Page 22 [ML661](#)



Page 23 [ML453](#)



PRINCESS CUT
Page 23 [ML386](#)



EMERALD CUT

Page 23 [ML652](#)



Page 24 [ML131](#)



PRINCESS CUT

Page 24 [ML553](#)



Page 24 [ML618](#)



Page 24 [ML659](#)



Page 24 [ML185](#)



PRINCESS CUT

Page 24 [ML643](#)



Page 24 [ML660](#)



PRINCESS CUT

Page 25 [PC224](#)



Page 25 [PC226](#)



Page 25 [PC225](#)



PRINCESS CUT

Page 25 [PC223](#)

ALL STYLES CAN BE MADE IN PLATINUM AND VS QUALITY DIAMONDS



MAPLE LEAF DIAMONDS™

WWW.MAPLELEAFDIAMONDS.COM